



**Makes 6 Rocket-Shaped Rectal Suppositories**

6 Cavities each of 7ml ± 0.5mL.

Mold Plates: hard anodized aluminum for long-life; flat surfaces precision machined for easier mold release. All other parts stainless steel (inox) 316.

Ejector & Air Vent Plate - assists in suppository removal & provides air vent in suppository.

Dishwasher safe (rinse cycle). Autoclave safe.

Easy to clean & dry: hand wash & to speed drying use hot air or IPA 70%.

**Item Code: X-MSM2159H**

**US \$330**

**Why Rocket Shaped Suppositories?**

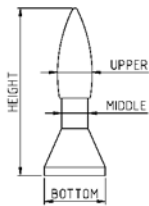
- Unique shape ensures medication is in contact with internal and external hemorrhoids.
- Contoured shape reduces risk of suppository being dislocated.
- Side vent allows gas to escape without the suppository being dislocated.
- Use with extended release formulations to treat hemorrhoids with fewer insertions.

**Dimensions & Weights**

**Individual Suppository**

**Suppository Mold**

Parameter	Approximate Dimensions		
	mm	inches	
Height	59.4	2.33	
	Upper	12.1	0.47
Diameter	Middle	9.2	0.36
	Bottom	21.4	0.84



Approximate Volume of one Suppository Cavity	7.0 ml
Net Weight (With Ejector Plates & Locking Knobs)	1 kg / 2.2 lbs
Shipping Weight	1.2 kg / 2.6 lbs
Length x Width x Height (mm)	180 x 52 x 108
Length x Width x Height (Inches)	7 x 2 x 4.3

The weight of all suppositories formed in one cycle will be ± 5% of average weight. Custom Molds Available.

**Formulas**

May be used with commercially available bases. Weight in grams/suppository  
 Medisca's SPG™ Supposi-Base = 6.6gm or PolyPEG Suppository Base = 8.0gm.  
 PCCA Suppository Base A (PEG1450) = 7.59gm/suppository or Base MBK™ (Item 30-1056) = 6.59gm/suppository.  
 Cocoa butter ~ 6.2 g/suppository. PEG1500 75% & PEG4000 25% ~ 8.1gm. Glycerinated Gelatin ~ 8.8gm.

Information on suppository base properties - <http://pharmlabs.unc.edu/labs/suppository/bases.htm>

Calibration of suppository mold - <http://pharmlabs.unc.edu/labs/suppository/labs.htm>

Density Factor of ingredients: <http://pharmlabs.unc.edu/labs/suppository/prep.htm>

Estimation of ingredients by calculation <http://pharmlabs.unc.edu/labs/suppository/estimation.htm>

Links provided as a service and do not imply an endorsement from the University of North Carolina or Dr. Shrewsbury. SPG™ is a trademark of Medisca Inc. MBK™ is a trademark of PCCA Inc.

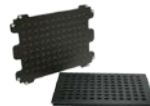
**Molds & Capsule Filling Equipment**



**.ProMold-TT**  
 For making molded tablets. Can also be used for making troche molds. 50 holes/cavities.  
 Sizes: 60mg, 100mg and 200mg.



**ProMold-TLM**  
 For making Troches (lozenges) 100 holes/cavities. Each cavity hold 750mg Polyethylene Glycol 1450. Custom size Molds available on request.



**ProMold-RDTM**  
 For compressing and baking 96 ready to dissolve tablets 13.5mm diameter and 6.5mm height. Tablet weight 650-700mg and depends on formula.



**ProFiller®**  
 Full Line of capsule filling systems in Hand-Held and Bench-Top Models. Available in sizes 000-5 including el sizes and AAA-D. *Output and available sizes vary based on Model.*